

PNEUMATIC MANUAL TIP-DRESSERS

code 163X-00604 = SRM XL
 code 163P-00115 = SRM
 code 163S-00916 = SRM SPEED



Code: **MD_C04**

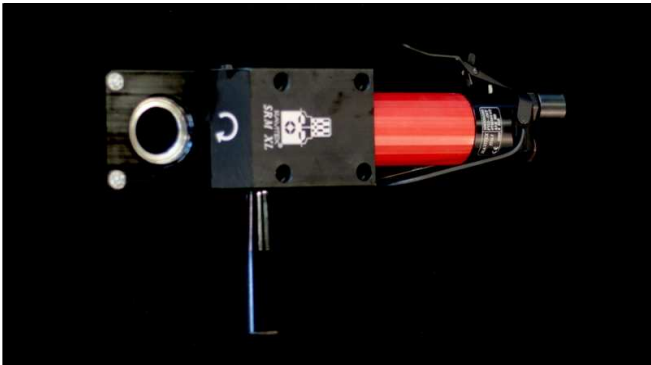
Review date: 080529

TOTAL QUALITY MANAGEMENT

SRM XL

APPLICATION: HANGING/STATIONARY MANUAL WELDING GUNS

In compliance with the Machinery Directive 89/392 EEC



Motor= Pneumatic
 Handle = anti slip red material
 Power= 0.400 Kw @ 6 bar
 Air consumption = 540 l/min @ 6 bar
 Air plug = \varnothing 3/8"
 Inner \varnothing of the air supply pipe = \varnothing 10 mm
 Air supply = 5+8 bar - ISO 8573 Class 3.4.3
 Distance between cutter center/ carter edge= 35 mm
 Tip-dresser's head height H = 20 mm
 Cutter holder model = RFA (**max. Electrodes \varnothing =20mm**)
 Additional side grip

OVERALL DIMENSIONS

X (length) = 310 mm
 Y (width) = 70 mm (body), 155 (body+side grip)
 Z (height) = 50 mm
 Overall weight: 2,40 Kg
 Coupling flange = 70x70 mm, 4 x holes for M6 screws
 Distance between holes 54x54 mm

TIP-DRESSING SETTINGS WITH RAVITEX® TECHNOLOGY

Cutter rotation speed loadless = 265 rpm
 Cutter rotation direction = clockwise
 Welding gun closing force = 90 \pm 10 daN
 Tip-dressing time of new electrodes = 2+5 seconds
 Tip-dressing time at cycle = 1+3 seconds
 Welding spots between tip dressing cycles = 150 +/- 50 spots
 Tip-dressing mode = closed welding gun, welding power off

SRM

APPLICATION: HANGING/STATIONARY MANUAL WELDING GUNS

In compliance with the Machinery Directive 89/392 EEC



Motor= Pneumatic
 Handle = anti slip red material
 Power= 0.400 Kw @ 6 bar
 Air consumption = 540 l/min @ 6 bar
 Air plug = \varnothing 3/8"
 Inner \varnothing of the air supply pipe = \varnothing 10 mm
 Air supply = 5+8 bar - ISO 8573 Class 3.4.3
 Distance between cutter center/ carter edge= 25 mm
 Tip-dresser's head height H = 20 mm
 Cutter holder model = RFM (**max. Electrodes \varnothing =16 (mm)**)

OVERALL DIMENSIONS

X (length) = 290 mm
 Y (width) = 50 mm
 Z (height) = 50 mm
 Overall weight: 1,50 Kg

TIP-DRESSING SETTINGS WITH RAVITEX® TECHNOLOGY

Cutter rotation speed loadless = 225 rpm
 Cutter rotation direction = clockwise
 Welding gun closing force = 90 \pm 10 daN
 Tip-dressing time of new electrodes = 2+5 seconds
 Tip-dressing time at cycle = 1+3 seconds
 Welding spots between tip dressing cycles = 150 +/- 50 spots
 Tip-dressing mode = closed welding gun, welding power off

SRM SPEED

APPLICATION: HANGING/STATIONARY MANUAL WELDING GUNS (OPEN ARMS)

In compliance with the Machinery Directive 89/392 EEC



Differs from SRM tip-dresser in the following features:
 Cutter rotation speed loadless = **1300 rpm**
Tip-dressing mode = open welding gun (1 single electrode at a time) + welding power off.
 Tip-dressing time = 4+8 seconds

OVERALL DIMENSIONS

X (length) = 260 mm
 Y (width) = 50 mm
 Z (height) = 50 mm
 Overall weight: 1,50 Kg

Drawings and models shown in this catalogue are properties of Sinterleghe S.r.l and protected under Ravitex® registered trademark. Sinterleghe S.r.l. reserve the rights to modify technical specifications and dimensions at any time without previous notice. Edition : 25-03-2009

SINTERLEGHE s.r.l.

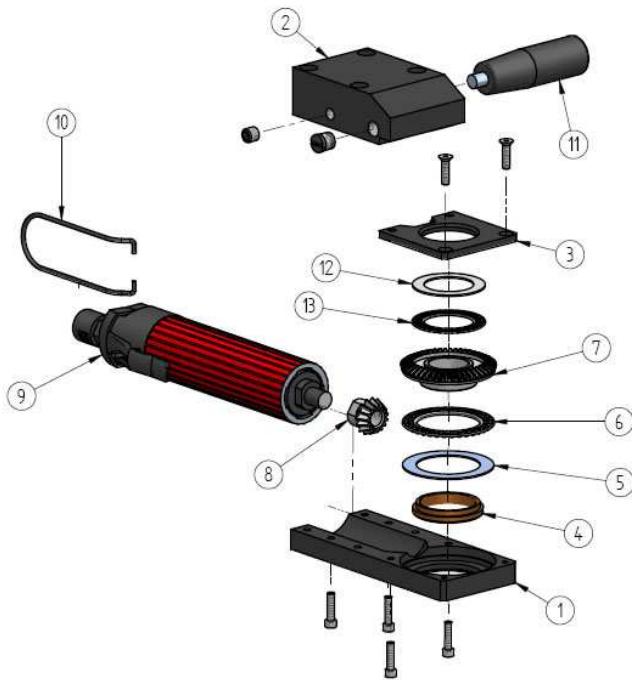
PNEUMATIC MANUAL TIP-DRESSERS

code 163X-00604 = SRM XL
 code 163P-00115 = SRM
 code 163S-00916 = SRM SPEED

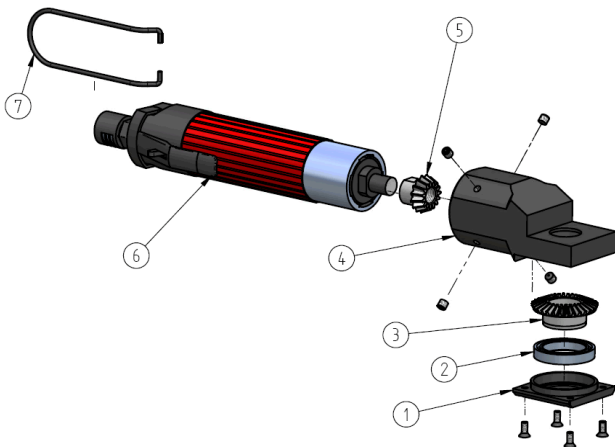
Code: **MD_C04**

Review date: 080529

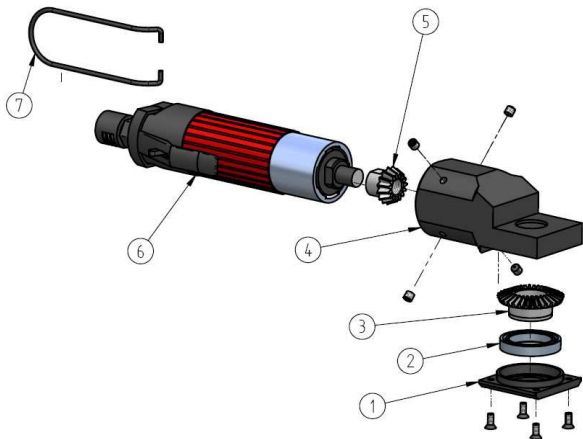
TOTAL QUALITY MANAGEMENT



No.	SRM XL Spare parts	Code	Pcs.
1	LOWER CARTER SRA/SRM XL	10A1-00209	1
2	UPPER CARTER SRM XL / SRA	10A1-00208	1
3	COVER SRA / SRM XL	10A1-00210	1
4	BUSH 40X50X8.5 SRA SRM XL FINISHED	04B3-01879	1
5	THRUST BEARING 45X65X1	04R6-00030	1
6	ROLLER BEARING WHEEL 45X65X3	04G2-00031	1
7	CUTTER HOLDER GEAR SRA/SRM XL RFA	06I4-00042	1
8	BEVEL PINION Z15 SRM XL	06I4-02103	1
9	PNEUMATIC MOTOR FY13 (SRM XL)	07P5-00767	1
10	HOOK FOR SRM	19RA-00378	1
11	MANUAL TIP-DRESSER SIDE GRIP	81MA-01416	1
12	THRUST BEARING 35X52X1	04R6-00215	1
13	ROLLER BEARING WHEEL 35X52X2	04G2-00216	1



No.	SRM Spare parts	Code	Pcs.
1	STEEL COVER SRM	10M2-00376	1
2	SINGLE ROW RADIAL BEARING	04R2-00036	1
3	CUTTER HOLDER GEAR Z30 SRM RFM	06I4-00046	1
4	ALUMINIUM BODY SRM	10M2-00375	1
5	BEVEL PINION Z15 M1,5 R1:2 SRM	06I4-00048	1
6	PNEUMATIC MOTOR MY 45 FY14 SRM	07P5-00056	1
7	HOOK FOR SRM	19RA-00378	1



No.	SRM SPEED Spare parts	Code	Pcs.
1	STEEL COVER SRM	10M2-00376	1
2	SINGLE ROW RADIAL BEARING	04R2-00036	1
3	CUTTER HOLDER GEAR Z30 SRM RFM	06I4-00046	1
4	ALUMINIUM BODY SRM	10M2-00375	1
5	BEVEL PINION Z15 M1,5 R1:2 SRM	06I4-00048	1
6	PNEUMATIC MOTOR FY8-400W 2600 GIRI	07P5-00917	1
7	HOOK FOR SRM	19RA-00378	1