

## PNEUMATIC TIP DRESSER SRA R DELTA

Code 99SA-04058 = SRA R DELTA

Code: **MD\_C04**

Review date: 080529

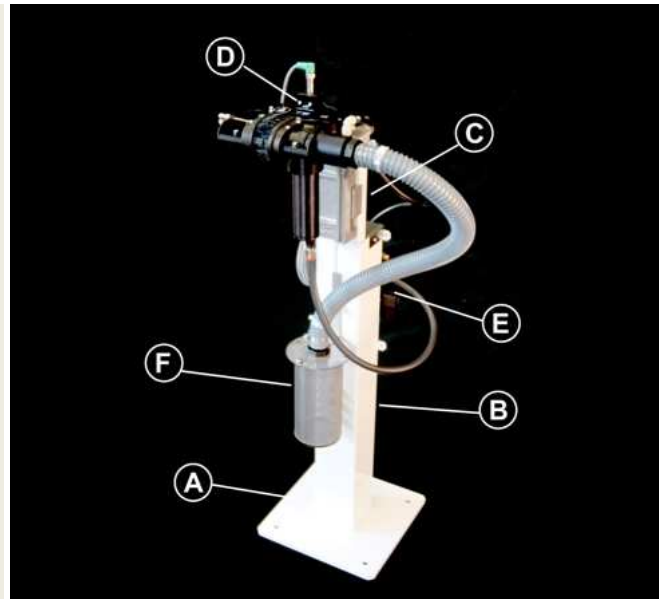
TOTAL QUALITY MANAGEMENT



**RAVITEX®**  
 dressing quality

SRA R DELTA pneumatic tip-dresser consists of:  
 A : base plate.  
 B : pillar welded to the base plate.  
 C : sliding bar supporting the tip-dresser's head.  
 D : equalised pneumatic tip-dresser's head including a pneumatic motor, a gear train for the transmission of motion to the cutter and the box of the suction device.  
 E : pneumatic group.  
 F : cylindrical box for the storage of copper swarves.

The tip dresser's head can be rotated by 90° on the vertical plane, in order to perfect tip-dressing positions.



### APPLICATION: ROBOT WELDING GUNS

In compliance with the Machinery Directive 89/392 EEC

#### OVERALL DIMENSIONS

X (length) = 300 mm  
 Y (width) = 500 mm  
 Z (adjustable height) = 1000 - 1400 mm  
 Overall weight: 26 Kg

#### INTERFACE

Base plate(A)=300x300 mm, 4x Ø 14 holes for M12screws  
 distance between holes 230x230 mm  
 Tip dresser's head = 4x M10 screws  
 distance between holes 40x40 mm.

#### ELECTRIC AND PNEUMATIC CONNECTIONS

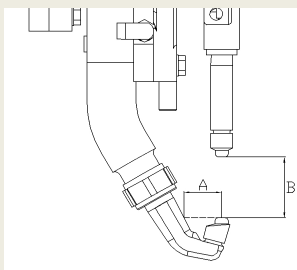
Pneumatic motor power = 0.400 Kw @ 6 bar  
 Voltage sensors/ solenoid valve=24 VDC  
 Air supply = 5÷8 bar - ISO 8573 Class 3.4.3  
 Motor air consumption = 900 l/min @ 6 bar  
 Air plug = Ø 3/8"  
 Air supply pipe = minimum inner Ø 10 mm  
 Suction device air consumption = 450 l/min @ 6 bar

#### TIP DRESSER'S FEATURES

Distance cutter center - carter edge= 42 mm  
 Tip-dresser's head height H = 20 mm  
 Cutter rotation speed loadless= 200 rpm  
 Cutter rotating direction= clockwise  
 Tip-dresser's head equalization height= +/- 10 mm  
 Standard cutter holder gear= 34R0-10021

Before supplying air, purge water and impurities from the pneumatic circuit.

#### COLLISION CHECK WELDING GUN – TIP-DRESSER



DIMENSION  
(mm)

HEAD  
MODEL

$B \geq 23$

Minimum  
dimension for  
all tip-  
dressers  
heads

$31 \leq A < 43$

DELTA RV

$A \geq 43$

DELTA

$A \leq 31$

Advise with  
Sinterleghe

#### MAINTENANCE

Lubrication = permanent  
 Tip-dresser/tip changer's head = multipurpose grease with PTFE  
 Swarves tray = empty once every 15 days

RAVITEX® Pneumatic and electric tip-dressers, as well as the automatic tip changer are designed and assembled using interchangeable parts, thus reducing the number of pieces and spare parts costs.

#### STANDARD COLOUR SCHEME

Structural steelwork = RAL 9010 white

#### WARRANTY

12 months, spare and wearable parts excluded.

Drawings and models shown in this catalogue are properties of Sinterleghe S.r.l and protected under Ravitex® registered trademark. Sinterleghe S.r.l. reserve the rights to modify technical specifications and dimensions at any time without previous notice. Edition : 25-03-2009

# SINTERLEGHE s.r.l.

# PNEUMATIC TIP DRESSER SRA R DELTA

Code 99SA-04058 = SRA R DELTA

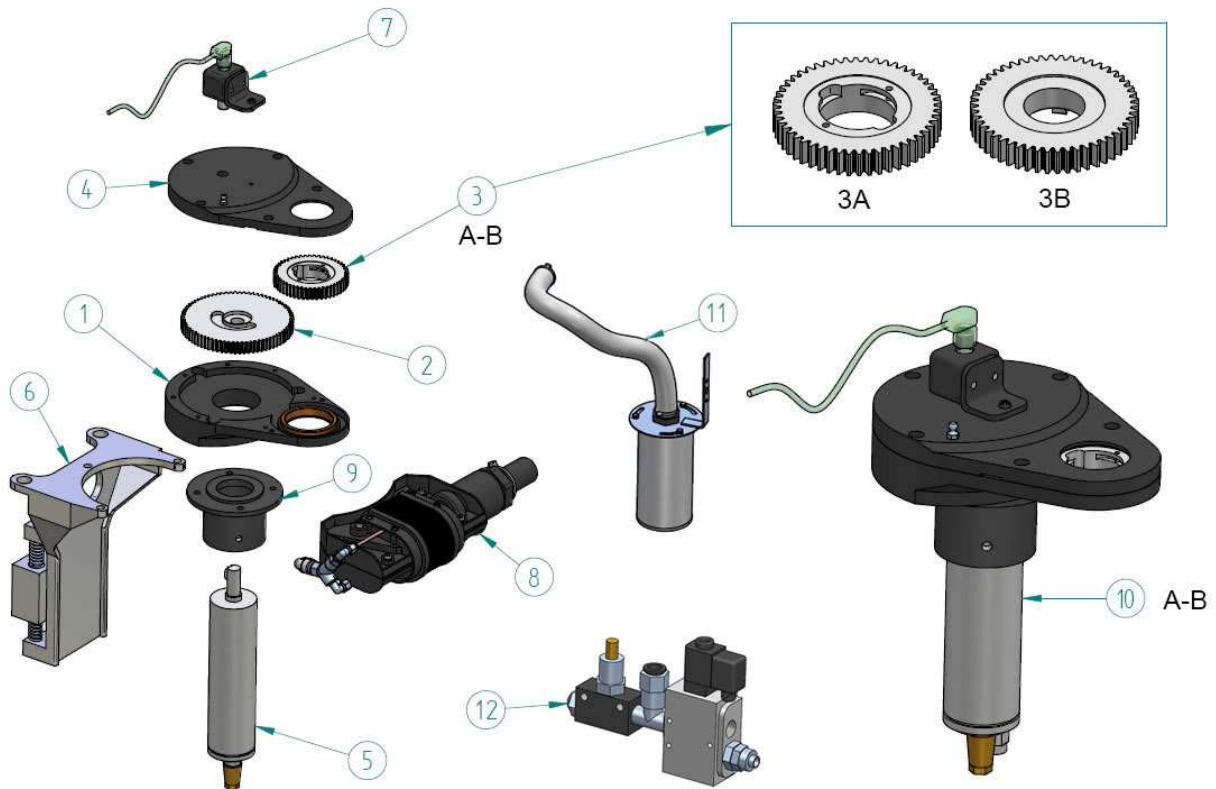
Code: **MD\_C04**

Review date: 080529

TOTAL QUALITY MANAGEMENT



**RAVITEX®**  
 dressing quality



POS.	SRA DELTA TIP DRESSER'S HEAD SPARE PARTS	CODE	PCS.
1	LOWER CARTER WITH BUSH	28RA-03376	1
2	SRE-DELTA MOTOR GEAR	06I4-01726	1
3a	CUTTER HOLDER GEAR RFRW WITH PLUNGERS	34R0-10021	1
3b	CUTTER HOLDER GEAR SRE DELTA FOR RFA BUSHES	06P4-02474	1
4	UPPER CARTER WITH BUSH	28RA-03375	1
5	PNEUMATIC MOTOR M22 RIGHT ROTATION (DELTA)	07P5-03947	1
6	HEAD SUPPORT WITH EQUALIZATOR	28HM-03381	1
7	SENSOR GROUP WITH CABLE	29RI-04401	1
8	PLASTIC SUCTION DEVICE WITH BRUSHES AND PNEUMATIC CONNECTION	29RI-04588	1
9	MOTOR HOLDER TUBE SRA DELTA 58XD100	10HD-03227	1
10a	PNEUMATIC DELTA TIP-DRESSER'S HEAD WITH SENSOR RFRW	29RI-04842/A	1
10b	PNEUMATIC DELTA TIP-DRESSER'S HEAD WITH SENSOR RFA	29RI-04842/B	1
11	CYLINDRICAL SWARVES TRAY WITH PIPE	29RI-04826	1
12	SRA DELTA SOLENOID VALVE AND FLOW REGULATOR KIT	19RA-04700	1

# SINTERLEGHE s.r.l.