

ELECTRIC TIP DRESSER SRE R DELTA

code 99SE-03613 = SRE R DELTA



RAVITEX®
 dressing quality

Code: **MD_C04**

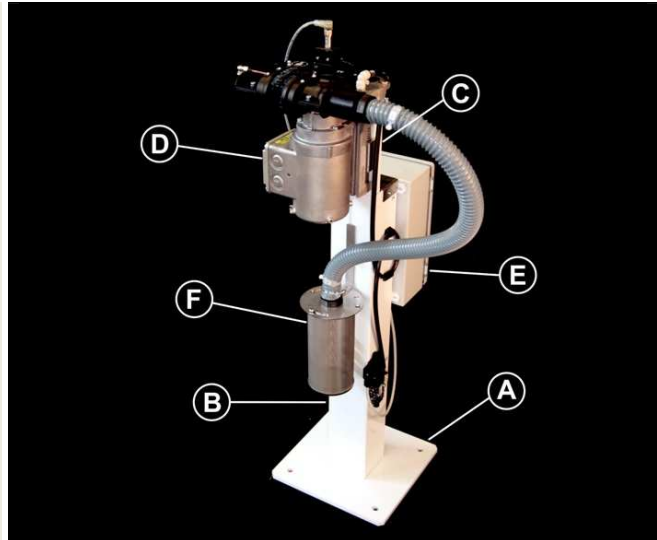
Review date: 080529

TOTAL QUALITY MANAGEMENT

SRE R DELTA electric tip dresser consists of:

- A : base plate
- B : pillar welded to the base plate
- C : sliding bar supporting the tip-dresser's head
- D: equalized tip-dresser's head including an electric motor (380 /500 V), a gear train for the transmission of the motion to the cutter and the box of the suction device.
- E : electric box.
- F : cylindrical box for copper swarves.

The tip-dresser's head can be rotated by 90° degrees on the vertical plane.



APPLICATION: ROBOT WELDING GUNS

In compliance with the Machinery Directive 89/392 EEC

OVERALL DIMENSIONS

X (length) = 300 mm
 Y (width) = 500 mm
 Z (adjustable height) = 1000 - 1400 mm
 Overall weight: 33 Kg

INTERFACE

Base plate(A)=300x300 mm, 4x Ø 14 holes for M12screws
 distance between holes 230x230 mm
 Tip dresser's head = 4x M10 screws
 distance between holes 40x40 mm.

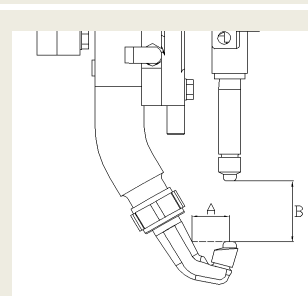
PNEUMATIC AND ELECTRIC CONNECTIONS

Power= 0.37 Kw Frequency = 50/60 Hz
 Voltage= 380/480 or 500 VAC + 24 VDC
 Current: 1.05 A (380V-50Hz)
 1.15A (480V-60Hz)
 0.84 A (500V)
 Duty type = S2-10 sec.
 Suitable flow rate= 450 l/min a 6 bar
 Air pipes minimum inner diameter = Ø 6 mm
 Air supply= 5+8 bar - ISO 8573 Class 3.4.3

TIP DRESSER'S FEATURES

Distance between cutter center/carter edge= 42mm
 Tip-dresser's head height H = 20 mm
 Cutter rotation speed loadless= 200 rpm
 Cutter rotating direction= clockwise
 Tip-dresser's head equalization height= +/- 10 mm
 Standard cutter holder gear= 34R0-10021

COLLISION CHECK WELDING GUN – TIP-DRESSER



DIMENSION (mm)	HEAD MODEL
$B \geq 23$	Minimum dimension for all tip-dressers heads
$31 \leq A < 43$	RV
$A \geq 43$	DELTA
$A \leq 31$	Advise with Sinterleghe

MAINTENANCE

Lubrication = permanent
 Tip-dresser/tip changer's head = multipurpose grease with PTFE
 Reduction unit= synthetic oil ISO VG 320
 Swarves tray = empty once every 15 days

RAVITEX® Pneumatic and electric tip-dressers, as well as the automatic tip changer are designed and assembled using interchangeable parts, thus reducing the number of pieces and spare parts costs.

STANDARD COLOR SCHEME

Structural steelwork = RAL 9010 white
 Electric box = RAL 7035 grey

WARRANTY

12 months, spare and wearable parts excluded.

Drawings and models shown in this catalogue are properties of Sinterleghe S.r.l and protected under Ravitex® registered trademark. Sinterleghe S.r.l. reserve the rights to modify technical specifications and dimensions at any time without previous notice. Edition : 25-03-2009

SINTERLEGHE s.r.l.

ELECTRIC TIP DRESSER SRE R DELTA

code 99SE-03613 = SRE R DELTA

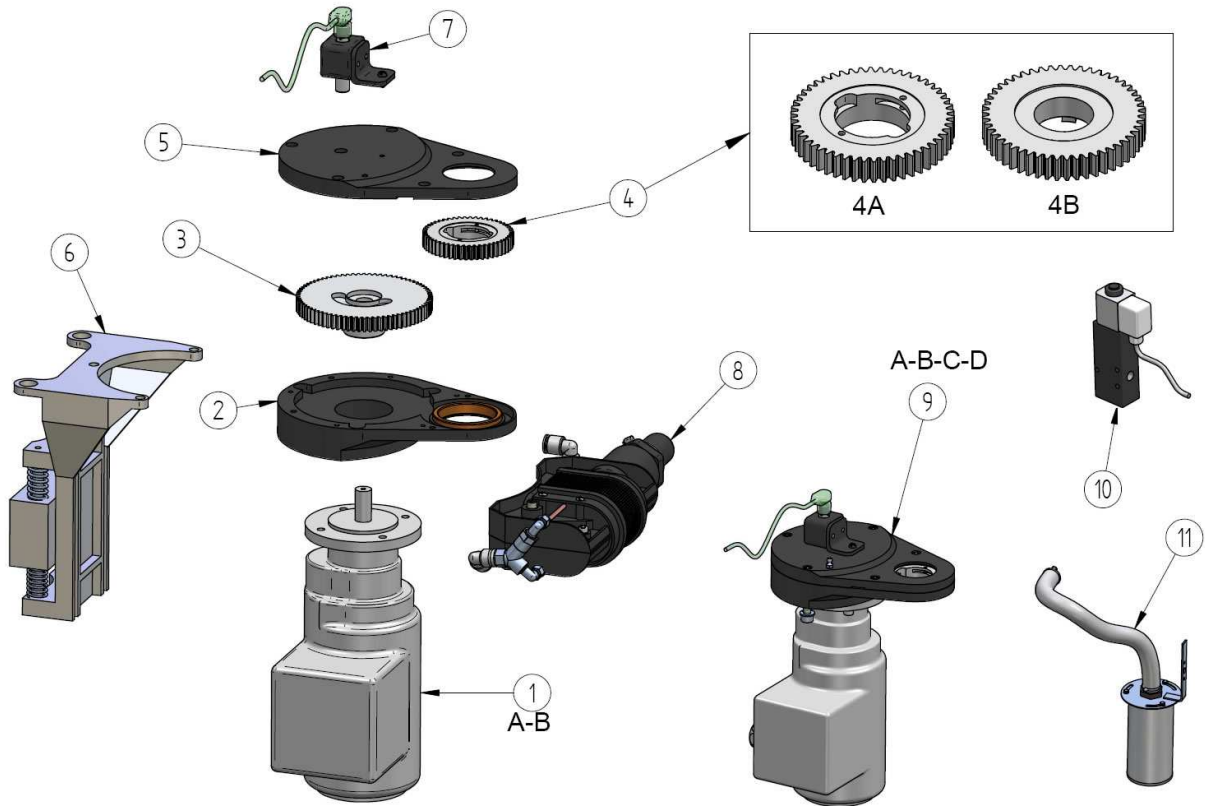
Code: **MD_C04**

Review date: 080529

TOTAL QUALITY MANAGEMENT



RAVITEX[®]
 dressing quality



POS.	SRE DELTA TIP DRESSER'S HEAD SPARE PARTS	CODE	PCS.
1a	GEARMOTOR 0,37KW/380-480V/50-60HZ	07E3-02409	1
1b	GEARMOTOR 0,37KW/380-480V/50-60HZ	07E3-02878	1
2	LOWER CARTER WITH BUSH	28RA-03376	1
3	SRE-DELTA MOTOR GEAR	06I4-01726	1
4a	CUTTER HOLDER GEAR RFRW WITH PLUNGERS	34R0-10021	1
4b	CUTTER HOLDER GEAR SRE DELTA FOR RFA BUSHES	06P4-02474	1
5	UPPER CARTER WITH BUSH	28RA-03375	1
6	HEAD SUPPORT WITH EQUALIZATOR	28HM-03381	1
7	SENSOR GROUP WITH CABLE	29RI-04401	1
8	PLASTIC SUCTION DEVICE WITH BRUSHES AND PNEUMATIC CONNECTION	29RI-04588	1
9a	DELTA TIP-DRESSER'S HEAD WITH SENSOR 380V RFRW	29RI-04471-AA	1
9b	DELTA TIP-DRESSER'S HEAD WITH SENSOR 380V RFA	29RI-04471-AB	1
9c	DELTA TIP-DRESSER'S HEAD WITH SENSOR 500V RFRW	29RI-04471-AS	1
9d	DELTA TIP-DRESSER'S HEAD WITH SENSOR 500V RFA	29RI-04471-AR	1
10	SOLENOID VALVE WITH CABLE	29RI-04400	1
11	CYLINDRICAL SWARVES TRAY WITH PIPE	29RI-04826	1

SINTERLEGHE s.r.l.