

ELECTRIC TIP-DRESSER SRE R DELTA TWIN

code 99SE-03280 = SRE R DELTA TWIN



RAVITEX®
 dressing quality

Code: **MD_C04**

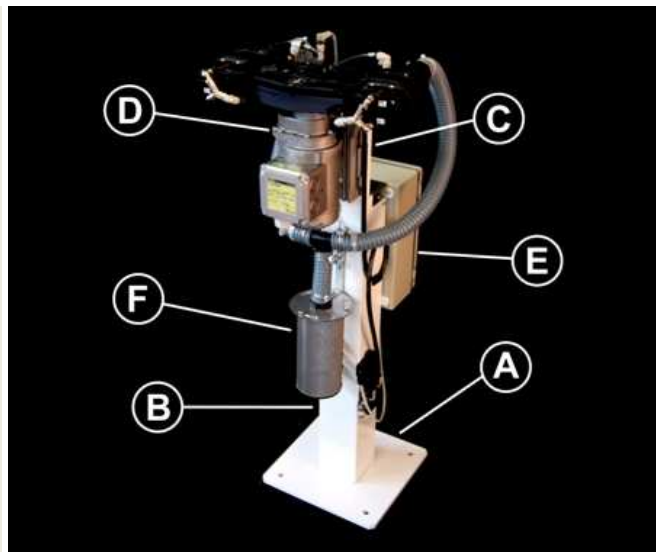
Review date: 080529

TOTAL QUALITY MANAGEMENT

SRE R DELTA TWIN electric tip dresser consists of:

- A : base plate
- B : pillar welded to the base plate
- C : sliding bar supporting the tip-dresser's head
- D: double equalized tip-dresser's head including an electric motor (380 /500 V), a gear train for the transmission of the motion to the cutter and the box of the suction device.
- E : electric box.
- F : cylindrical box for copper swarves.

The tip-dresser's head can be rotated by 90° degrees on the vertical plane.



APPLICATION: ROBOT WELDING GUNS WITH DIFFERENT ELECTRODES COUPLES

In compliance with the Machinery Directive 89/392 EEC

OVERALL DIMENSIONS

X (length) = 300 mm
 Y (width) = 500 mm
 Z (adjustable height) = 1000 - 1400 mm
 Overall weight: 35.5 kg

INTERFACE

Base plate(A)=300x300 mm, 4x Ø 14 holes for M12screws
 distance between holes 230x230 mm
 Tip dresser's head = 4x M10 screws
 distance between holes 40x40 mm.

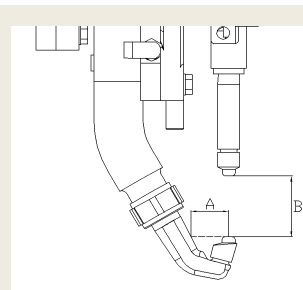
PNEUMATIC AND ELECTRIC CONNECTIONS

Power= 0.37 Kw Frequency = 50/60 Hz
 Voltage= 380/480 or 500 VAC + 24 VDC
 Current: 1.05 A (380V-50Hz)
 1.15A (480V-60Hz)
 0.84 A (500V)
 Duty type = S2-10 sec.
 Suitable flow rate= 650 l/min a 6 bar
 Air pipes minimum inner diameter = Ø 8 mm
 Air supply= 5÷8 bar - ISO 8573 Class 3.4.3

TIP DRESSER'S FEATURES

Cutters on board: 2 for two different couples of electrodes
 Distance between cutter center/carter edge= 42mm
 Tip-dresser's head height H = 20 mm
 Cutter rotation speed loadless= 200 rpm
 Cutter rotating direction= clockwise
 Tip-dresser's head equalization height= +/- 10 mm
 Standard cutter holder gear= 34R0-10021

COLLISION CHECK WELDING GUN – TIP-DRESSER



DIMENSION (mm)	HEAD MODEL
$B \geq 23$	Minimum dimension for all tip-dressers heads
$31 \leq A < 43$	RV
$A \geq 43$	DELTA
$A \leq 31$	Advise with Sinterleghe

MAINTENANCE

Lubrication = permanent
 Tip-dresser/tip changer's head = multipurpose grease with PTFE
 Reduction unit= synthetic oil ISO VG 320
 Swarves tray = empty once every 15 days

RAVITEX® Pneumatic and electric tip-dressers, as well as the automatic tip changer are designed and assembled using interchangeable parts, thus reducing the number of pieces and spare parts costs.

STANDARD COLOUR SCHEME

Structural steelwork = RAL 9010 white
 Electric box = RAL 7035 grey

WARRANTY

12 months, spare and wearable parts excluded.

Drawings and models shown in this catalogue are properties of Sinterleghe S.r.l and protected under Ravitex® registered trademark. Sinterleghe S.r.l. reserve the rights to modify technical specifications and dimensions at any time without previous notice. Edition : 25-03-2009

SINTERLEGHE s.r.l.

ELECTRIC TIP-DRESSER SRE R DELTA TWIN

code 99SE-03280 = SRE R DELTA TWIN

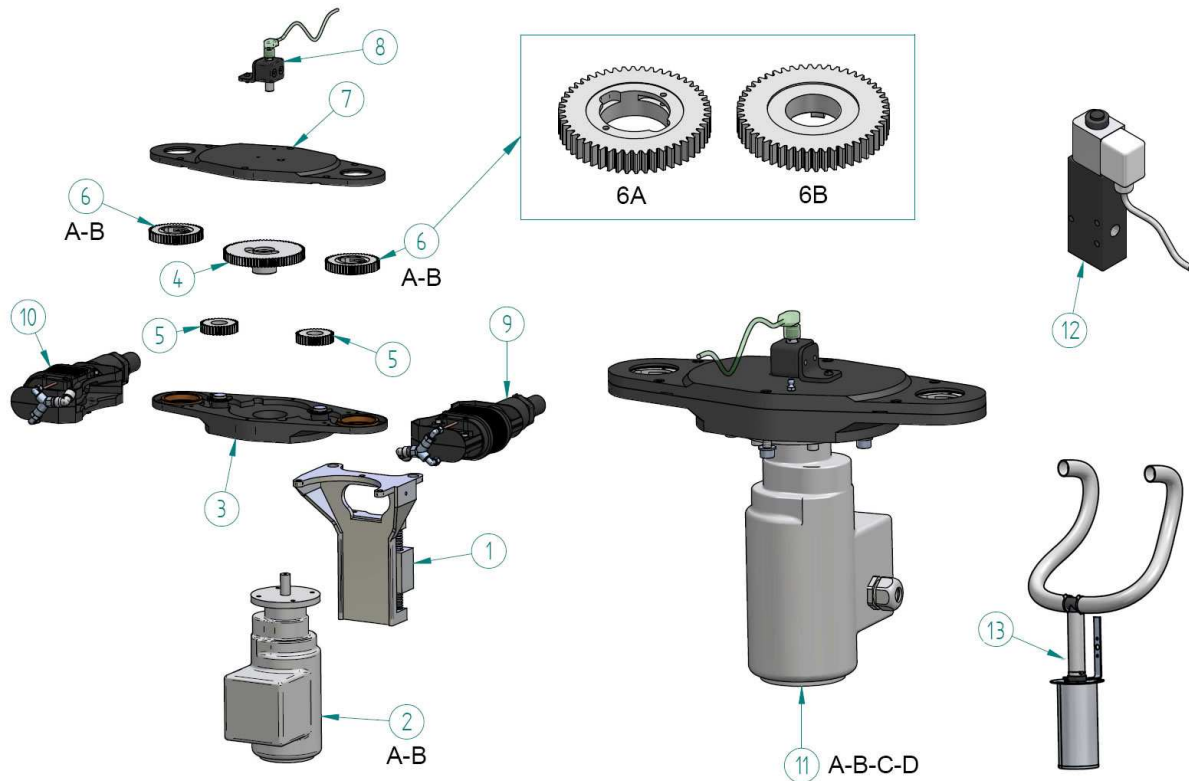
Code: **MD_C04**

Review date: 080529

TOTAL QUALITY MANAGEMENT



RAVITEX®
 dressing quality



POS.	SRE DELTA TWIN TIP DRESSER'S HEAD SPARE PARTS	CODE	PCS.
1	HEAD SUPPORT WITH EQUALIZATOR	28HM-03381	1
2a	GEARMOTOR 0,37KW/380-480V/50-60HZ	07E3-02409	1
2b	GEARMOTOR 0,37KW/500V/50 HZ	07E3-02878	1
3	LOWER SRE DELTA TWIN CARTER WITH BUSHES AND PIVOTS	28RA-04629	1
4	SRE DELTA MOTOR GEAR	06I4-01726	1
5	SRE DELTA TWIN/SCA NEUTRAL GEAR	06I4-03224	2
6a	CUTTER HOLDER GEAR RFRW WITH PLUNGERS	34R0-10021	2
6b	CUTTER HOLDER GEAR SRE-DELTA FOR RFA BUSHES	06P4-02474	2
7	UPPER SRE DELTA TWIN CARTER WITH BUSHES	28RA-04630	1
8	SENSOR GROUP WITH CABLE	29RI-04401	1
9	PLASTIC SUCTION DEVICE WITH BRUSHES AND PNEUMATIC CONNECTION	29RI-04588	1
10	PLASTIC SUCTION DEVICewith BRUSHES AND PNEUMATIC CONNECTION LEFT	29RI-04798	1
11a	SRE DELTA TWIN TIP DRESSER'S HEAD WITH SENSOR 380V RFRW	29RI-04693-AA	1
11b	SRE DELTA TWIN TIP DRESSER'S HEAD WITH SENSOR 380V RFA	29RI-04693-AB	1
11c	SRE DELTA TWIN TIP DRESSER'S HEAD WITH SENSOR 500V RFRW	29RI-04693-AS	1
11d	SRE DELTA TWIN TIP DRESSER'S HEAD WITH SENSOR 500V RFA	29RI-04693-AR	1
12	3/2 1/4" SOLENOID VALVE WITH CABLE	34R0-10031	1
13	CYLINDRICAL SWARVES TRAY FOR SRE DELTA TWIN WITH PIPES	34R0-10051	1

SINTERLEGHE s.r.l.