

ELECTRIC TIP-DRESSER SRE R RV

code 99SE-03331 = SRE R RV

Code: **MD_C04**

Review date: 080529

TOTAL QUALITY MANAGEMENT

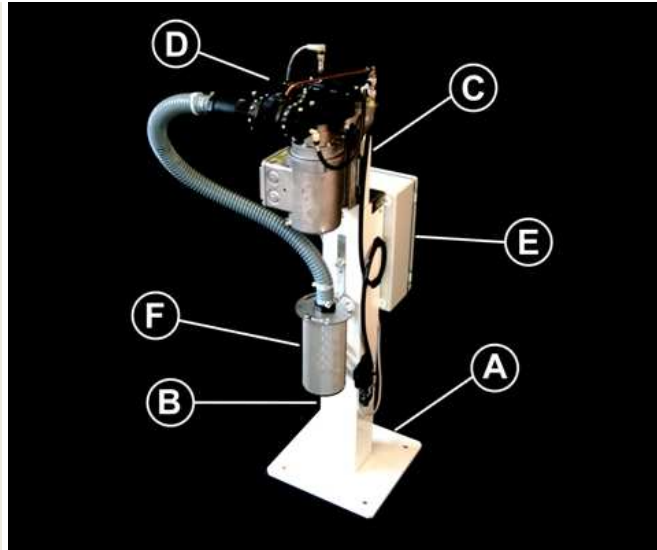


RAVITEX®
 dressing quality

SRE R RV tip-consists of:

- A : base plate
- B : pillar welded to the base plate
- C : sliding bar supporting the tip-dresser's head
- D: equalized tip-dresser's head including an electric motor (380 /500 V), a gear train for the transmission of the motion to the cutter and the box of the suction device.
- E : electric box
- F : cylindric box for the storage of copper swarves.

The tip dresser's head can be rotated by 90° on the vertical plane, in order to perfect tip-dressing positions.



APPLICATION: ROBOT WELDING GUNS

In compliance with the Machinery Directive 89/392 EEC

OVERALL DIMENSIONS

X (length) = 300 mm
 Y (width) = 500 mm
 Z (adjustable weight) = 1000 - 1400 mm
 Overall weight: 33 Kg

INTERFACE

Base plate(A)=300x300 mm, 4x Ø 14 holes for M12screws
 distance between holes 230x230 mm
 Tip dresser's head = 4x M10 screws
 distance between holes 40x40 mm.

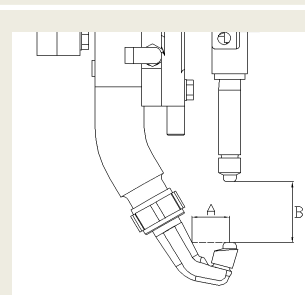
ELECTRIC AND PNEUMATIC CONNECTIONS

Power= 0.37 kW
 Frequency= 50/60 Hz
 Voltage= 380/480 or 500 VAC + 24 VDC
 Duty cycle= S2-10 sec.
 Current = 1.05 A (380V-50 Hz)
 1.15 A (480V-60 Hz)
 0.84 A (500V-50 Hz)
 Suitable air flow rate = 450 l/min at 6 bar
 Air supply pipe minimum inner diameter = Ø 6 mm
 Air supply = 5÷8 bar - ISO 8573 Class 3.4.3

TIP DRESSER'S FEATURES

Distance cutter center - carter edge= 30 mm
 Tip-dresser's head height H = 20 mm
 Cutter rotation speed loadless= 200 rpm
 Cutter rotating direction= clockwise
 Tip-dresser's head equalization height= +/- 10 mm
 Standard cutter holder gear= **0614-02357**

COLLISION CHECK WELDING GUN – TIP-DRESSER



DIMENSIONE (mm)	HEAD MODEL
$B \geq 23$	Minimum dimension for all tip-dressers heads
$31 \leq A < 43$	DELTA RV
$A \geq 43$	DELTA
$A \leq 31$	Advise with Sinterleghe

MAINTENANCE

Lubrication = permanent
 Tip-dresser/tip changer's head = multipurpose grease with PTFE
 Reduction unit= synthetic oil ISO VG 320
 Swarves tray = empty once every 15 days

 RAVITEX® Pneumatic and electric tip-dressers, as well as the automatic tip changer are designed and assembled using interchangeable parts, thus reducing the number of pieces and spare parts costs.

STANDARD COLOUR SCHEME

Structural steelwork = RAL 9010 white
 Electric box = RAL 7035 grey

WARRANTY

12 months, spare and wearable parts excluded.

Drawings and models shown in this catalogue are properties of Sinterleghe S.r.l and protected under Ravitex® registered trademark. Sinterleghe S.r.l. reserve the rights to modify technical specifications and dimensions at any time without previous notice. Edition : 25-03-2009

SINTERLEGHE s.r.l.

ELECTRIC TIP-DRESSER SRE R RV

code 99SE-03331 = SRE R RV

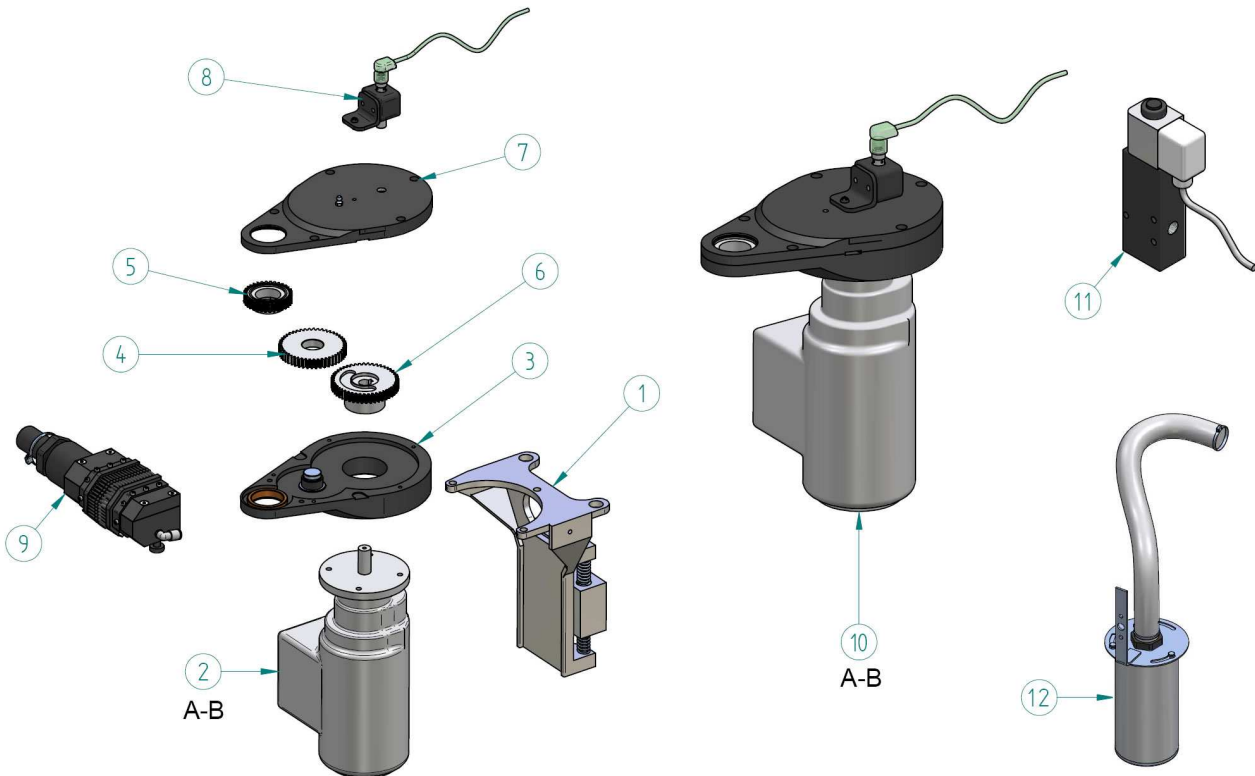
Code: **MD_C04**

Review date: 080529

TOTAL QUALITY MANAGEMENT



RAVITEX®
 dressing quality



POS.	SRE RV TIP-DRESSER'S HEAD SPARE PARTS	CODE	PCS.
1	HEAD SUPPORT WITH EQUALIZATOR	28HM-03381	1
2A	GEARMOTOR 0,37KW/380-480V/50-60HZ	07E3-02409	1
2B	GEARMOTOR 0.37KW/500V/50HZ	07E3-02878	1
3	LOWER CARTER SRE RV WITH BUSH AND PIVOT	28RA-04635	1
4	NEUTRAL GEAR SRE RV	0614-02356	1
5	CUTTER HOLDER GEAR SRE RV FOR RFA BUSHES	0614-02357	1
6	MOTOR GEAR SRE RV	0614-02358	1
7	UPPER CARTER SRE RV WITH BUSH	28RA-04636	1
8	SENSOR GROUP WITH CABLE	29RI-04401	1
9	SUCTION DEVICE RV WITH CONNECTIONS	29RI-04799	1
10a	RV TIP-DRESSER'S HEAD WITH SENSOR 380V RFA	29RI-04638-AA	1
10b	RV TIP-DRESSER'S HEAD WITH SENSOR 500V RFA	29RI-04638-AR	1
11	SOLENOID VALVE WITH CABLE	29RI-04400	1
12	CYLINDRICAL SWARVES TRAY WITH PIPE	29RI-04826	1

SINTERLEGHE s.r.l.