

Single blade cutter

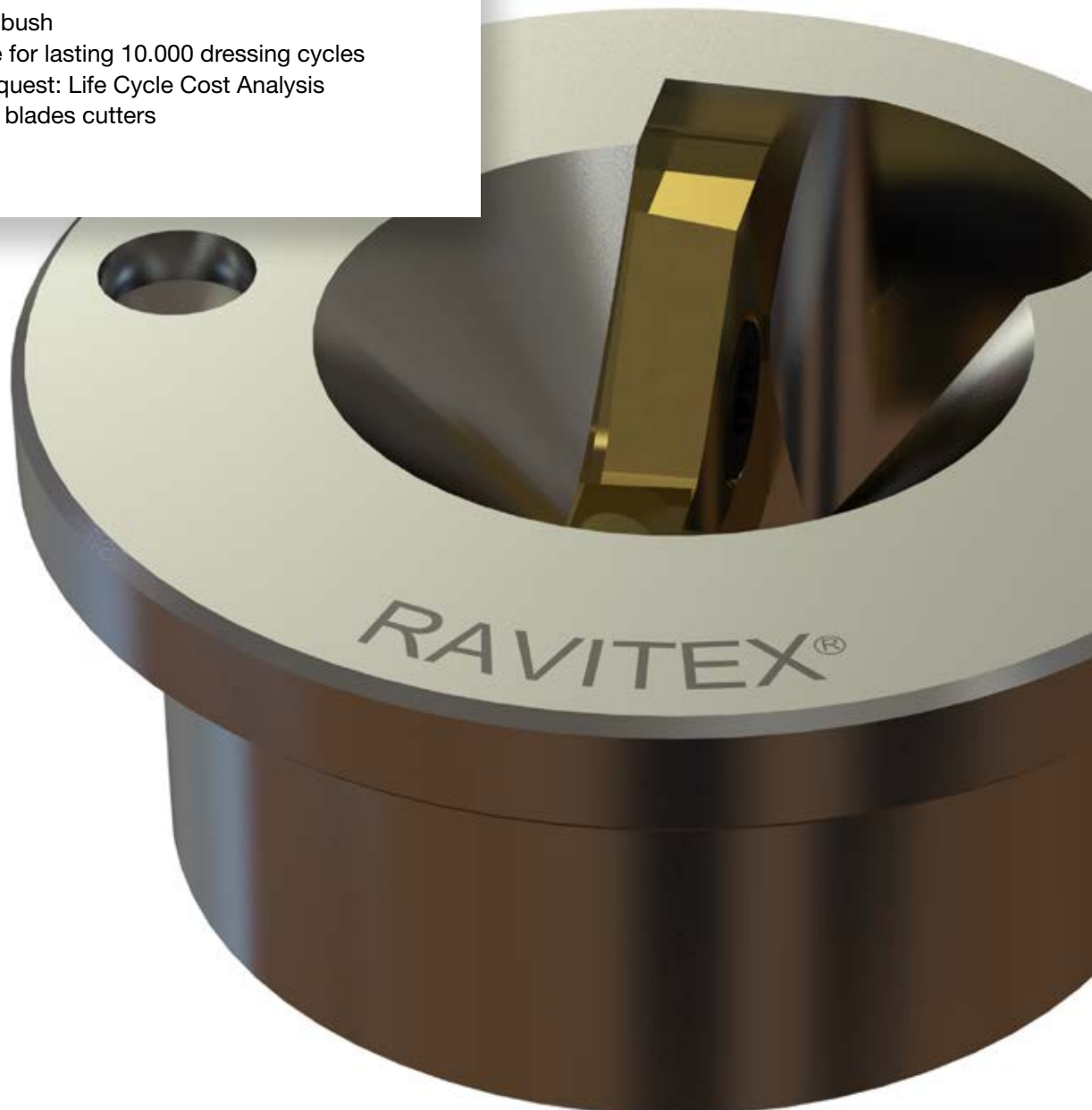
Our TiN coated in HSS single blade cutters remove the oxides on the dressed electrodes' surface.

The goal is to supply a suitable tool to dress electrodes with the below features:

1. dressed surfaces' roughness of 0.5 Ra
2. welding lens diameter on customer request
3. copper chips thickness dimensions: about 0.8 mm

Thanks to the above points, we guarantee quality of dressed electrodes with the below points:

1. regardless the dresser brand on which the cutters are installed
2. only on RFRW bush
3. blades suitable for lasting 10.000 dressing cycles
4. available on request: Life Cycle Cost Analysis
RX.2 VS single blades cutters



Datasheet cutter 070201000001



Single blade cutter RFRW F16 45 R8 P6 R50 SB

Suitable to dress Sinterleghe, Bräuer

Weight 0.13 kg

Recommended operating parameters

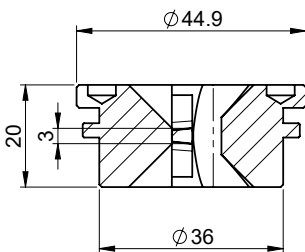
Dressing closing force 1.15±0.15 kN

Shape of dressed electrode

Dressable electrode shapes

Code to purchase:
070201000001

Measures:

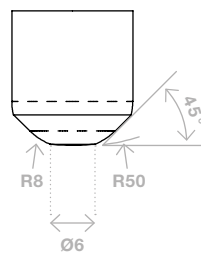


Units of measurement: mm

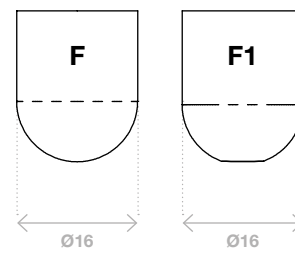
Electrode shapes:

New _____
Dressed - - - - -

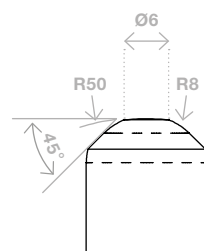
Upper:



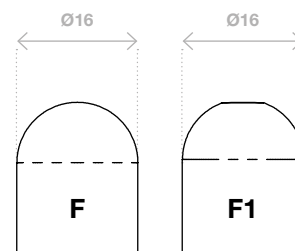
Upper:



Lower:



Lower:



ISO Standard 5821
39D 1978

Sample datasheet: each cutter is designed according to the shape of the electrode to be obtained after dressing