

RX.2 three blades hard metal cutter patented

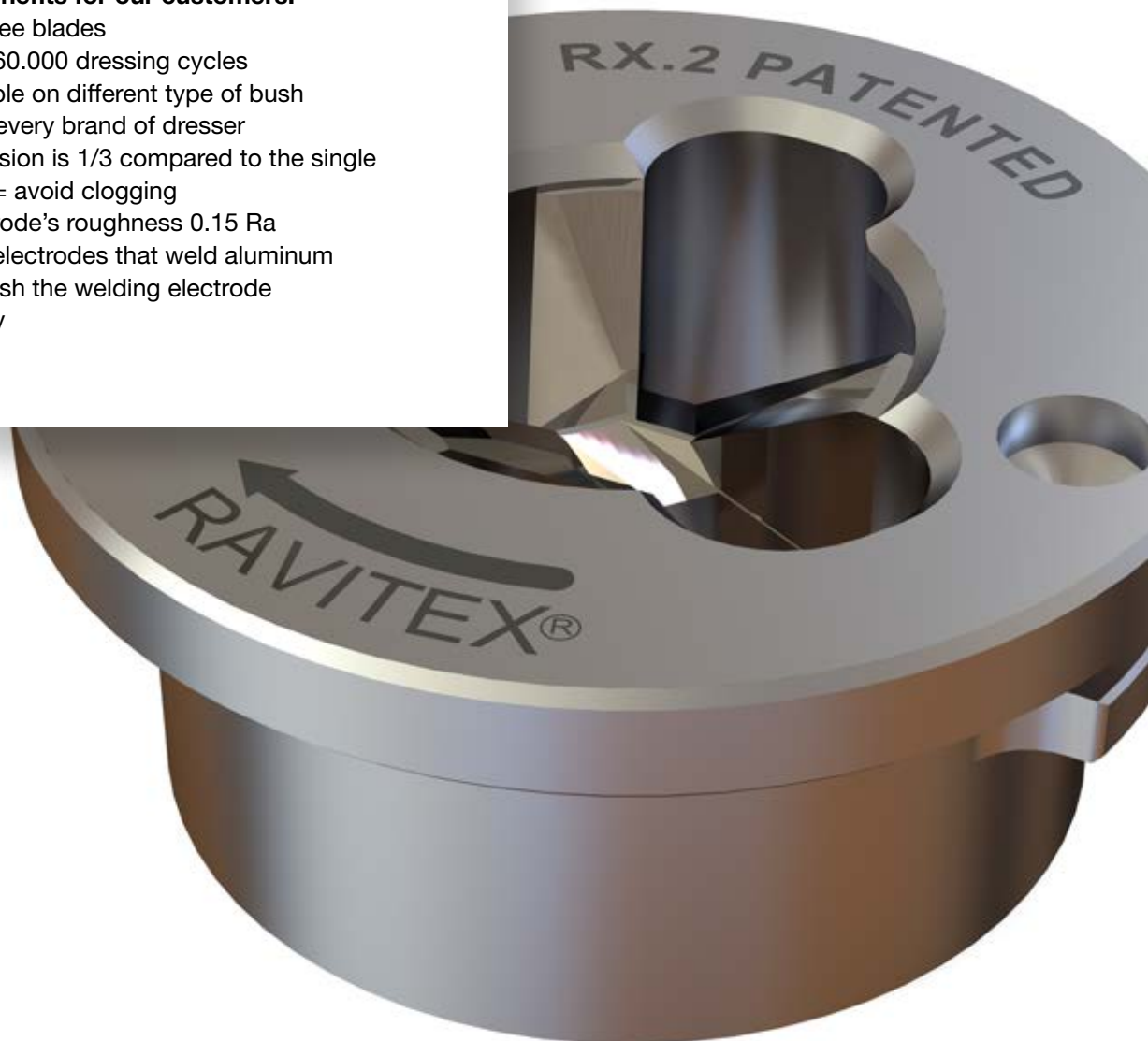
Excellence does not come at random.

Since the 40s, Anzola d'Ossola is the Italian district known for sintering hard metal. It is here that, in 2007, collecting the legacy of a long family tradition, Sinterleghe patents the innovative hard metal three blades insert installed on the RX cutters.

Production with CNC 4.0 machines, supported from predictive maintenance, guarantees its quality for both small and large series.

Key performances of excellence are transformed in unique Key benefits for our customers.

- Hard metal three blades
= cutter life ≥ 60.000 dressing cycles
- Blade applicable on different type of bush
= usable with every brand of dresser
- Copper dimension is 1/3 compared to the single blade cutters = avoid clogging
- Dressed electrode's roughness 0.15 Ra
= suitable for electrodes that weld aluminum
- Dress and polish the welding electrode simultaneously



Datasheet cutter 070501000015



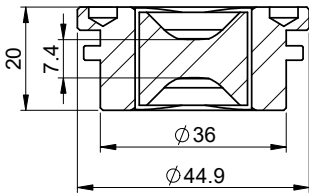
Cutter RFRW F16 45 R8 P6 R30 RX.2 patented

Suitable to dress	Sinterleghe, Bräuer
Recommended welding gun closing force	1.3±0.2 kN
Max. welding gun closing force	2.5 kN
Weight	0.17 kg

3 blades in hard metal

Code to purchase:
070501000015

Measures:

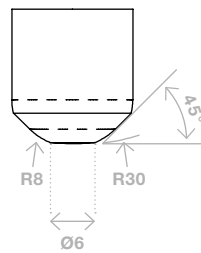


Units of measurement: mm

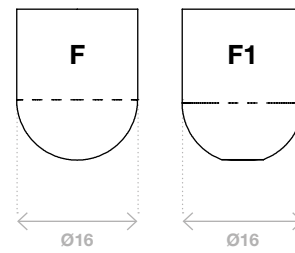
Shape of dressed electrode

Dressable electrode shapes

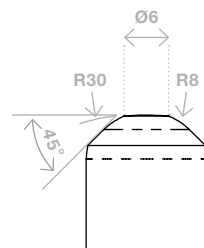
Upper:



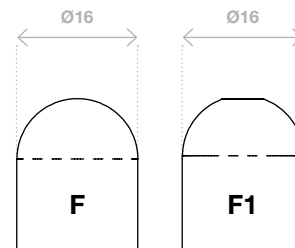
Upper:



Lower:



Lower:



ISO standard 5821
39D 1978

Sample datasheet: each cutter is designed according to the shape of the electrode to be obtained after dressing