

RX.2 three blades hard metal cutter patented

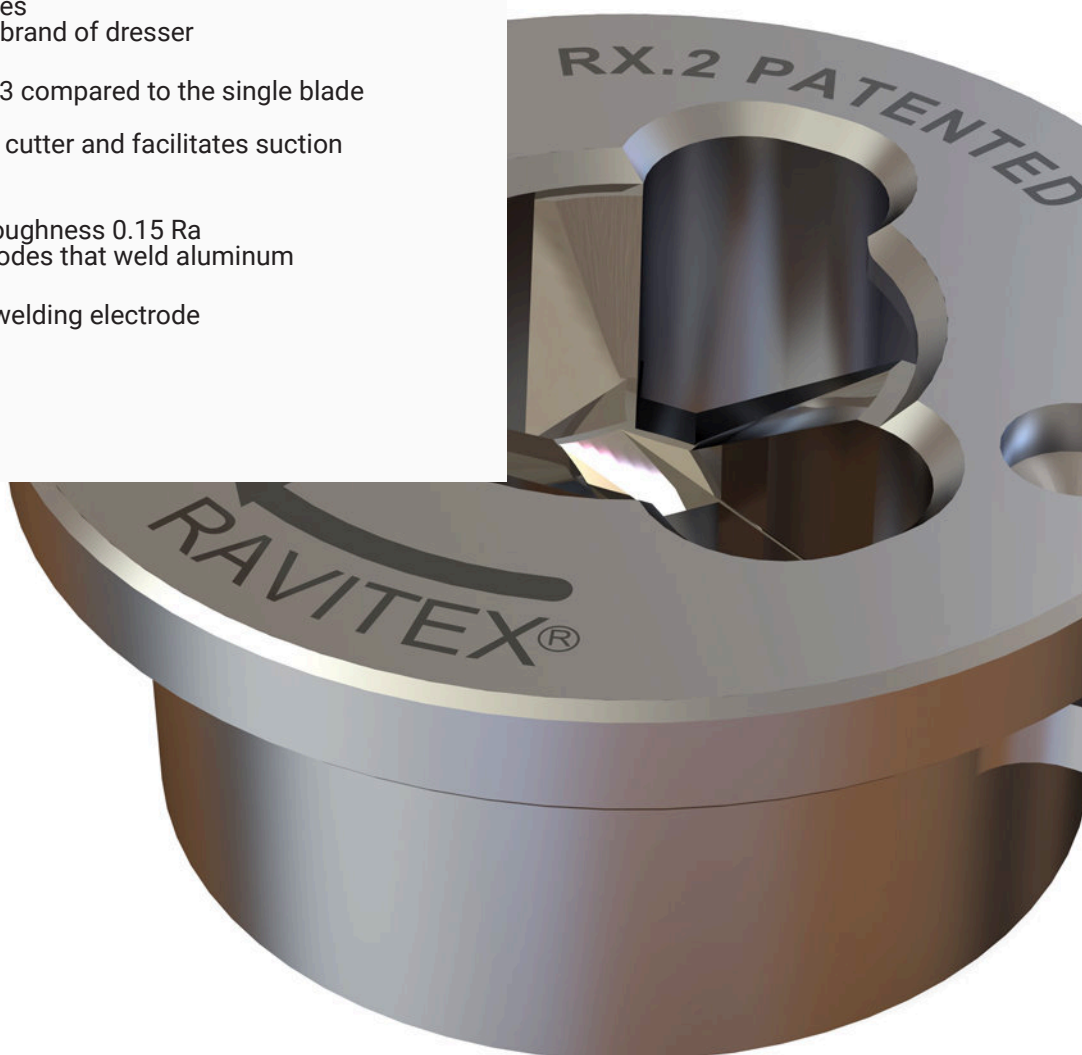
Excellence does not come at random.

Since the 40s, Anzola d'Ossola is the Italian district known for sintering hard metal. It is here that, in 2007, collecting the legacy of a long family tradition, Sinterleghe patents the innovative hard metal three blades insert installed on the RX cutters.

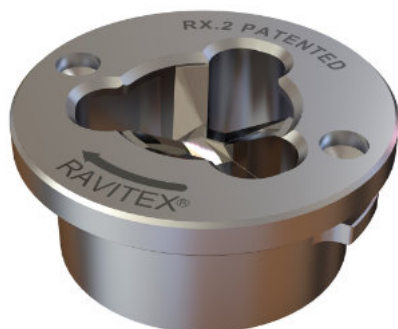
Production with CNC 4.0 machines, supported from predictive maintenance, guarantees its quality for both small and large series.

Key performance of excellence are transformed in unique Key benefits for our customers.

- Material three blades insert
 - cutter life $\geq 30\,000$ dressing cycles
- Hard metal three blades
 - usable with every brand of dresser
- Copper chip size is 1/3 compared to the single blade cutters
 - prevents clogging cutter and facilitates suction chip
- Dressed electrode's roughness 0.15 Ra
 - suitable for electrodes that weld aluminum
- Dress and polish the welding electrode simultaneously



Product data sheet 070501000110



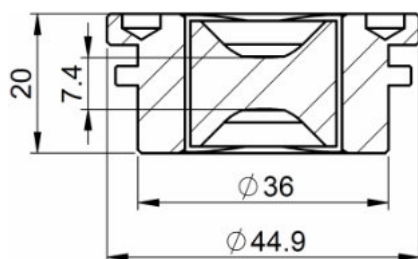
Cutter RFRW F16 45 R8 P6 R40 RX.2 Patented

Suitable to dress	Sinterleghe, Bräuer
Recommended welding gun closing force	1.3 ± 0.2 kN
Max welding gun closing force	2.5 kN
Weight	0.16 kg

3 blades in hard metal

Code to purchase:
070501000110

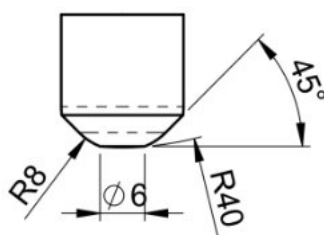
Measures:



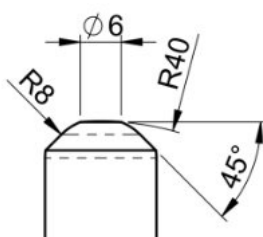
Units: mm

Shape of dressed electrode

Upper:

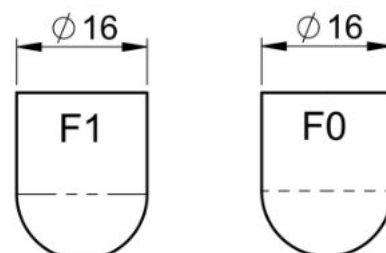


Lower:

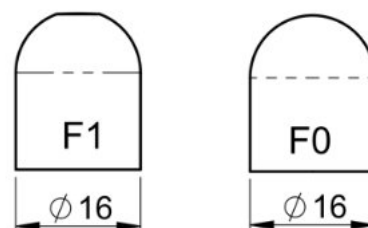


Dressable electrode shapes

Upper:



Lower:



ISO Standard 5821
39D 1978

Sample data sheet: each cutter is designed according to the shape of the electrode to be obtained after dressing